

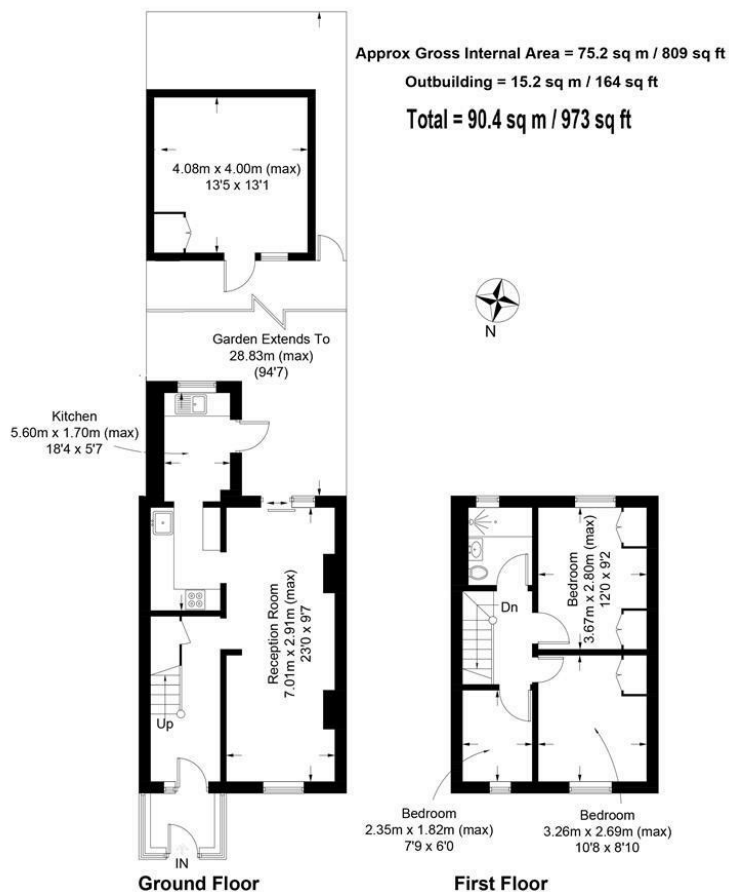
**Hawkes Road
Mitcham, CR4 3JJ**

£450,000 Freehold

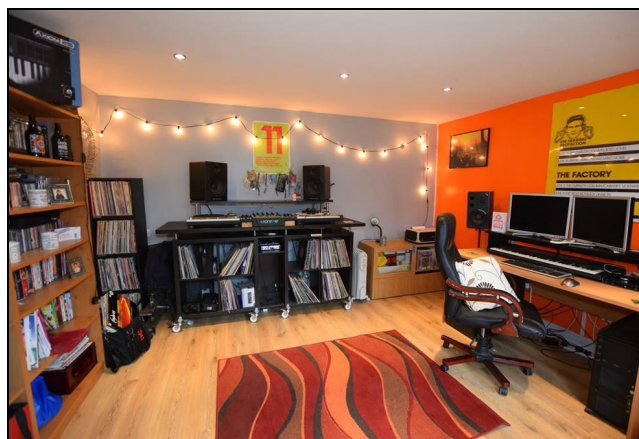


Lovely well presented 3 bedroom family home extended on the ground floor. Off street parking and spacious living accommodation with doors out on to a private 90' south facing garden. Studio/office with power. This is a fantastic family home.

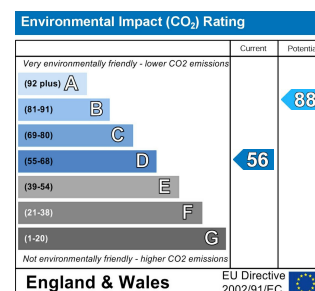
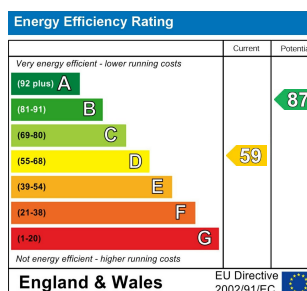
Hawkes Road, CR4



This floor plan is for representation purposes only and is not drawn to scale.
The Gross Internal Area includes outbuildings shown on the plan.
Whilst every attempt has been made to ensure the accuracy of the plan measurements of doors, windows and rooms are approximate only and should be checked before making any decisions reliant upon them.
Copyright Bespokeplans.co.uk (ID394193)



- Extended on the Ground Floor
- South Facing Garden
- Studio/Office with Power
- Off Street Parking
- EPC Rating D
- Fantastic Family Home



For Free Mortgage Quote and Best Mortgage Rates, call an Ellisons Mortgage Advisor on 020 8544 0518

Although these particulars are believed to be correct, their accuracy is not guaranteed and they do not form part of any contract.

Ellisons Estate Agents Limited

Registered Office: 4th Floor, Tuition House, St. George's Road, Wimbledon, London SW19 4EU. Registered in England & Wales, company number 7533420